

## TECHNICAL INFORMATION

### DRIVE TRAIN and STEERING

- Advanced SepEx 24V DC Drive Motor with sealed bearings, heavy duty commutator and stainless steel brush holders offers a powerful traction control system.
- Super Quiet ZF Direct Drive Transmission with large roller bearing is oiled for life and comes with manufacturer's three year warranty.
- SepEx control system provides smooth acceleration and energy saving dynamic braking. Travel speeds are virtually constant even driving up or down an incline regardless of the load.
- The drive motor, transmission, brakes and drive wheel are coupled to the all new Full Function Dura Control Handle.
- The Complete Drive system is securely mounted within the truck chassis for maximum protection.

### STRUCTURE

- The all new "Brilliant by Design" chassis incorporates the very latest Laser Lock technology. Cut from Australian made steel by computer generated laser beams the system produces an interlocking chassis that is so strong it comes with a lifetime warranty.
- Special I Beam Mast Section provides strength and rigidity.
- The Fork Carriage is an integrally welded unit.
- The Fork Carriage is fully rollered to ensure smooth, long-wearing performance.

### HYDRAULIC SYSTEM

- Full system filtration is provided on the input side of the lift pump to prevent contaminants from entering the hydraulic system.
- A heavy duty gear pump drives the single acting lift cylinder with chrome plated ram providing smooth lift and lower performance with minimal power consumption.
- Built in pressure relief valve protects system from overloads.

### ELECTRICAL SYSTEM

- 24V system powered by dual 12V Semi Traction Type Batteries.
- The Curtis SepEx transistorised programmable Control System with Multimode allows infinite control of all machine functions.
- Benefits include smooth speed response, increased usable battery energy per charge, extended motor life and regenerative braking.
- Multimode allows parameters for acceleration, speed, deceleration and current limits to be set for both operating modes.
- Direction (forward/ reverse), Horn and Lift / Lower controls are housed in the new DURA control handle mounted on the spring balanced control arm.
- Hydraulic Pump Motor is designed for peak electrical efficiency at specific torque and RPM to match lift pump requirements.

### WHEELS

- Polyurethane Wheels:
- Drive: 270mm dia. x 75mm  
Quick change type press on
  - Load: Wide Straddle Units: 125mm dia. X 50mm  
Rigid Fork Units: 80mm x 60mm

### OPTIONAL EQUIPMENT

- Sideshift : CONDA 1500 Model only
- Full Traction battery
- Hazard light & Beeper
- Hinged Rider Platform
- Flame Proofing

### TRAVEL, LIFT and LOWER SPEEDS

#### Travel Speed:

Laden and Empty - up to 6kph

#### Lift Speed:

Empty - up to 12 metres per min

Laden - up to 5.5 metres per min

#### Lowering Speed:

Empty - up to 11 metres per min

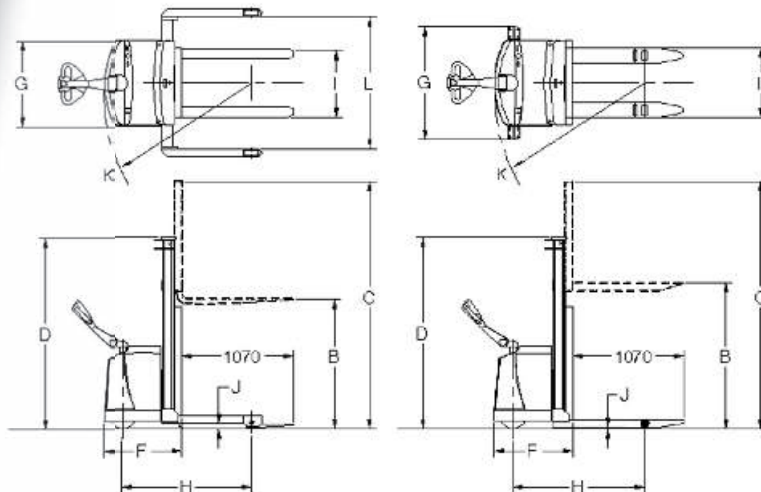
Laden - up to 8 metres per min



### SAFETY FEATURES

- Certified to operate from tropical to cold room conditions.
- Dynamic Braking.
- Wide view mast.
- Belly button reversing switch.
- Ergonomically safe butterfly type speed control.
- Deadman Braking applies brake and cuts power.
- Wrap around hand guards.
- Emergency power disconnect.
- Electronic overload protection.
- Hydraulic overload protection.
- Automatic high speed cut out when forks are raised above 1800mm.
- Low Speed Select switch in handle.
- Built in Smart Battery Charger.
- Load backrest.

MAST	MODEL	FORK TYPE	TWO STAGE					
			2.5	3.0	3.5	4.0	4.5	5.0
Lift Height m.	MDS		2.5	3.0	3.5	4.0	4.5	5.0
A. Capacity at 600mm L.C kg.	MDS1.3	ADJ	1300	1300	1300	1300	1100	--
	MDS1.5	ADJ	1500	1500	1500	1500	1300	1000
	MDS1.3	RIGID	1300	1300	1300	750	500	--
	MDS1.5	RIGID	1500	1500	1500	1000	750	--
B. Lift Height mm.			2500	3000	3500	4000	4500	5000
C. Extended Height mm. with Load Backrest	ADJ		3680	4180	4680	5180	5680	4680
	RIGID		2930	3430	3930	4430	4930	4930
D. Collapsed Height mm.			1780	2030	2280	2530	2780	3030
E. Free Lift mm.			350					
F. Chassis Length mm. (To face of forks)			760					
G. Chassis Width mm.	ADJ		820					
	RIGID		1080					
H. Wheelbase mm.			1242					
I. Carriage Width mm. Fork I.D./O.D. Mm.	ADJ		812 / 660					
	RIGID		380 / 680 or 260 / 560					
J. Chassis Under clearance mm.	ADJ		50					
	RIGID		25					
K. Turning Radius mm.			1480					
L. Straddle I.D./O.D. Mm.	ADJ		1220 / 1370 or 1270 / 1420					
	RIGID		430 / 630 or 310 / 510					
M. Weight Less Battery kg.			780	800	820	840	860	880
N. Battery Compartment mm.			795mm x 188mm x 570mm high					
N. Right Angle Stacking Aisle mm.			Dimension F plus Load Length plus 100mm.					



OSKO FORKLIFTS PTY LTD  
 ABN 99 474 507 725 will not assume liability for injuries or damages arising from, or caused by, the removal of any safety devices from their vehicles by users. Due to the OSKO policy of continuing product improvements, specifications are subject to change without notice.

**SUMI**  
 Brilliant by design

BY **OSKO**

Telephone  
 International +618 8269 6777  
 Australia 1300 650 991  
 Email sales@sumi.com.au  
 Web www.sumi.com.au

